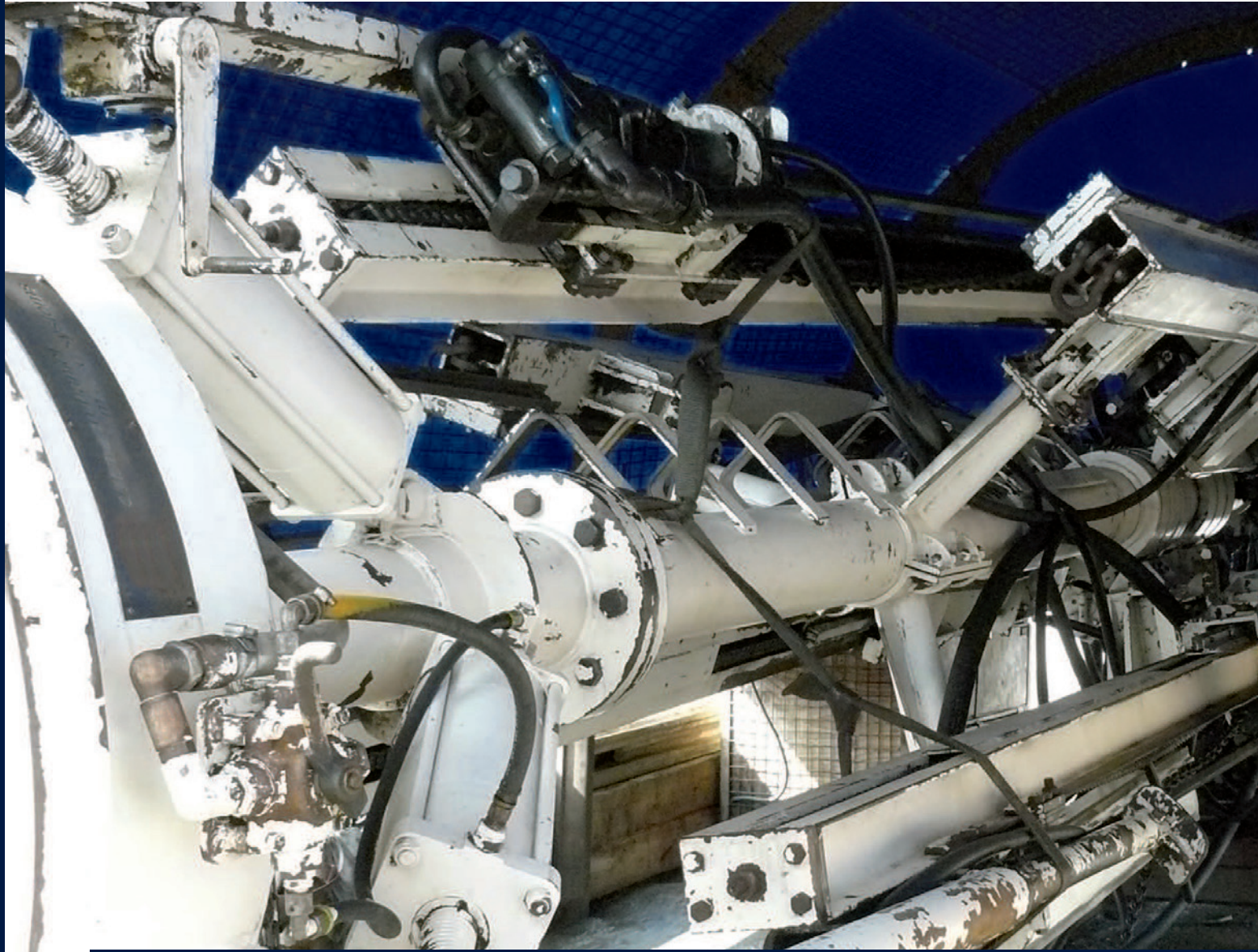


HAZEMAG



HAZEMAG Shaft Drill Rigs | HSD 3 | HSD 4 | HSD 6
HAZEMAG Schachtbohrgeräte | HSD 3 | HSD 4 | HSD 6



Salzgitter

TURMAG

Shaft Drill Rigs | HSD 3 | HSD 4 | HSD 6

Schachtbohrgeräte | HSD 3 | HSD 4 | HSD 6

Applications

Drilling tasks during shaft sinking operations:

- Blast holes
- Prospecting holes
- Injection holes
- Water drainage holes

Anwendungsgebiete

Bohraufgaben beim Abteufen von Schächten:

- Sprenglochbohrungen
- Erkundungsbohrungen
- Injektionsbohrungen
- Wasserlösungsbohrungen

Versions / Varianten

HSD 3 - three drill booms

HSD 3 - drei Bohrarme



HSD 4 - four drill booms

HSD 4 - vier Bohrarme



HSD 6 - six drill booms

HSD 6 - sechs Bohrarme



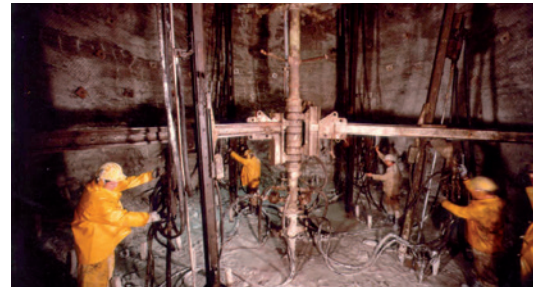
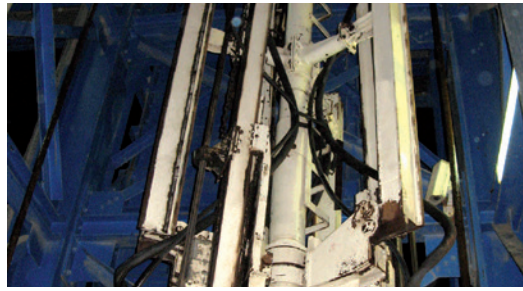
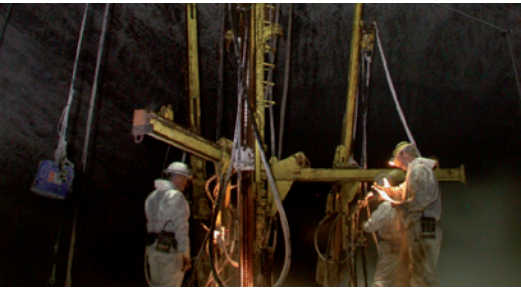
Main characteristics

- pneumatically driven
- adaptable to various shaft diameters
- drill feed systems for various blast hole lengths (up to 4800 mm)
- foldable like an umbrella to create a minimum diameter for transport through the shaft platform to the shaft floor
- rapid erection at shaft bottom
- rapid and accurate positioning of drill feeds to blast hole pattern due to stable set up by bracing elements
- integrated lubricating system for drifters and pneumatic feed motors
- easy maintenance due to undercarriage for horizontal storage at shaft bank

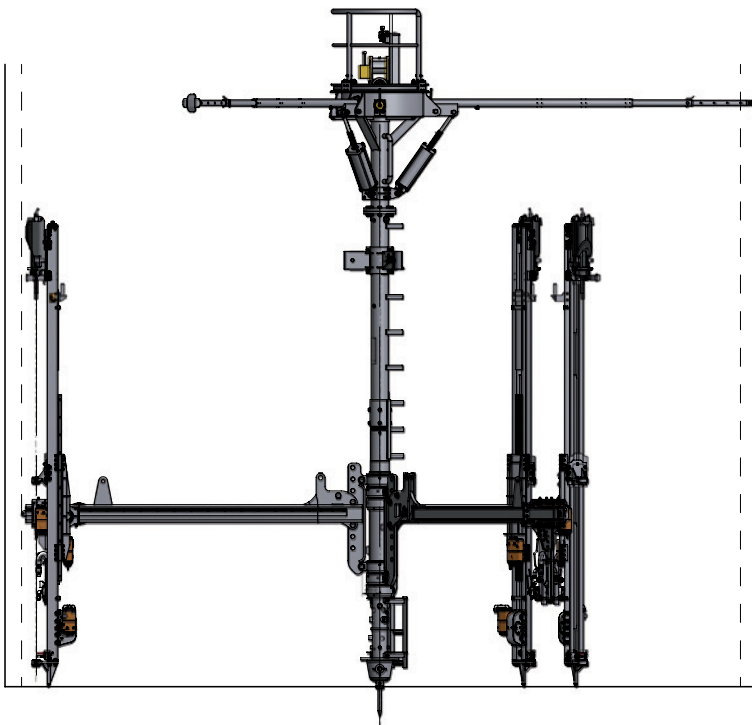
Eigenschaften

- pneumatischer Antrieb
- anpassbar an unterschiedliche Schachtdurchmesser
- Lafettensysteme für verschiedene Bohrlochtliefen (bis zu 4800 mm)
- einfaltbar auf einen minimalen Transportdurchmesser für den Transport durch die Schachtbühne zur Schachtsohle
- schnelle Auf- und Abrüstung auf der Schachtsohle
- schnelles und präzises Einrichten der Bohrlafetten auf alle Bohrlochansatzpunkte durch stabile Verspannung des Bohrgerätes
- integriertes Schmiersystem für die Bohrhämmer und pneumatischen Vorschubmotore
- einfache Wartung durch horizontale Parkstellung auf Transportwagen am Schachtanschlag

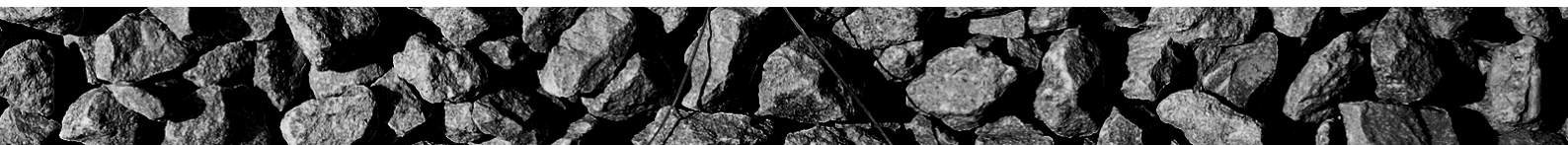
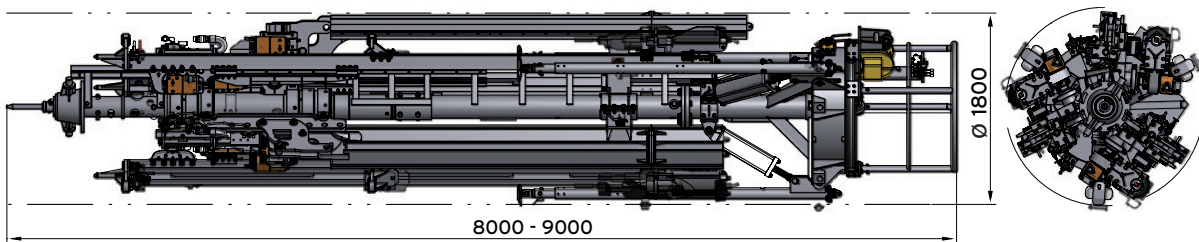




HSD 3



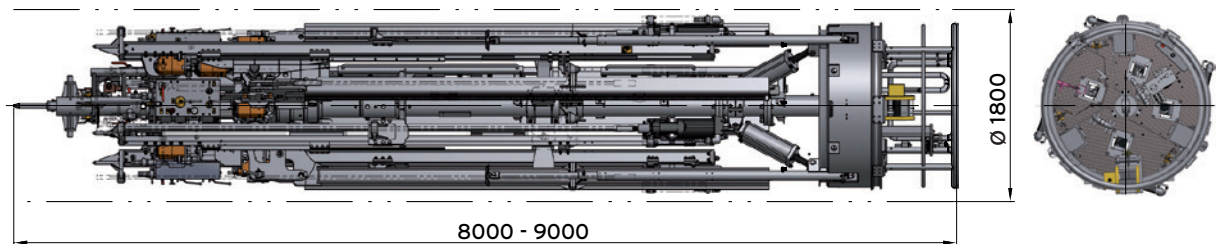
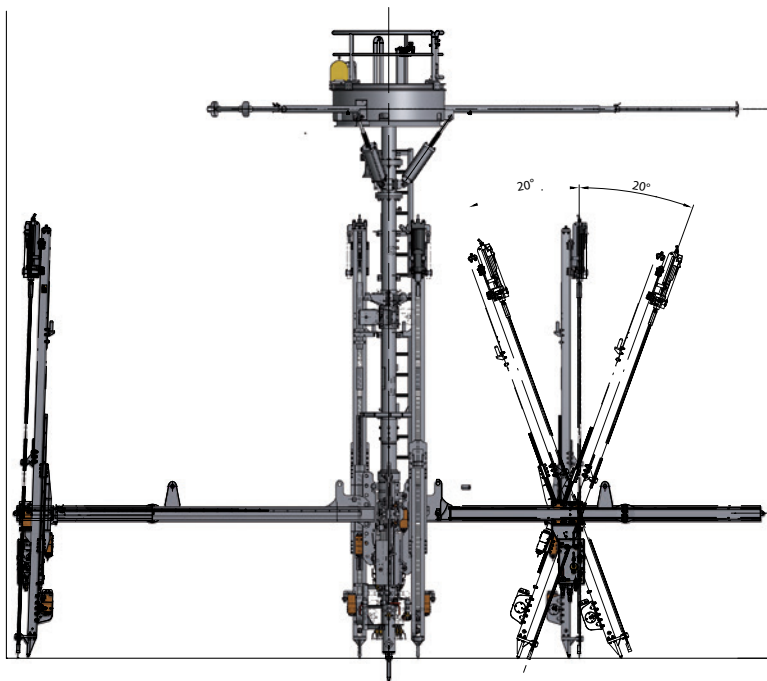
HSD 3 (at shaft landing / im Füllort)

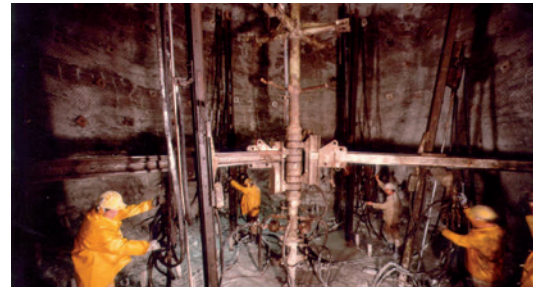
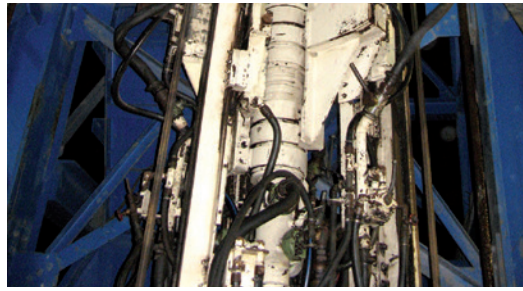


Shaft Drill Rigs | HSD 3 | HSD 4 | HSD 6

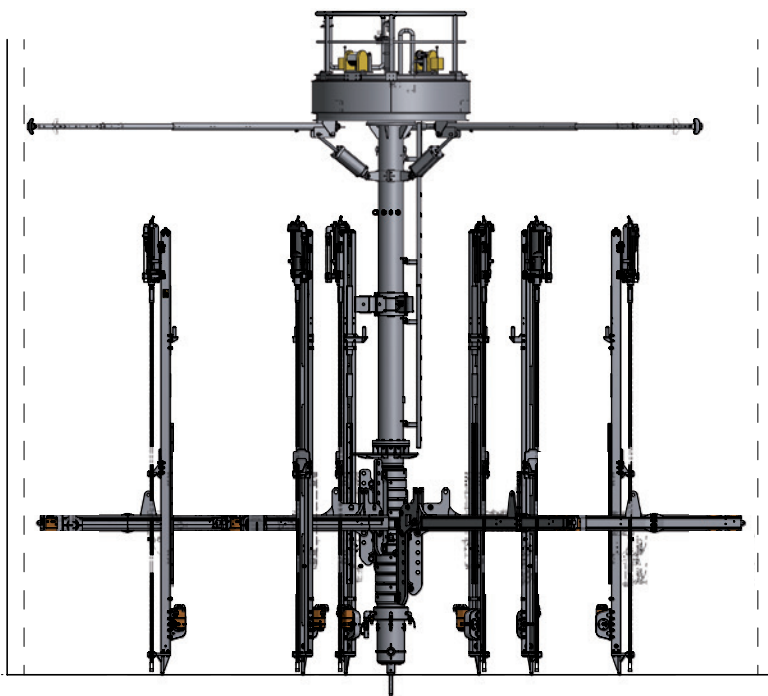
Schachtbohrgeräte | HSD 3 | HSD 4 | HSD 6

HSD 4

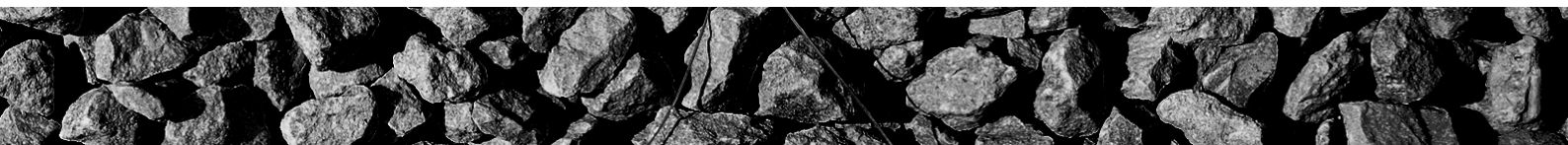
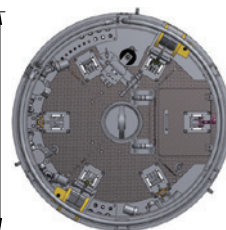
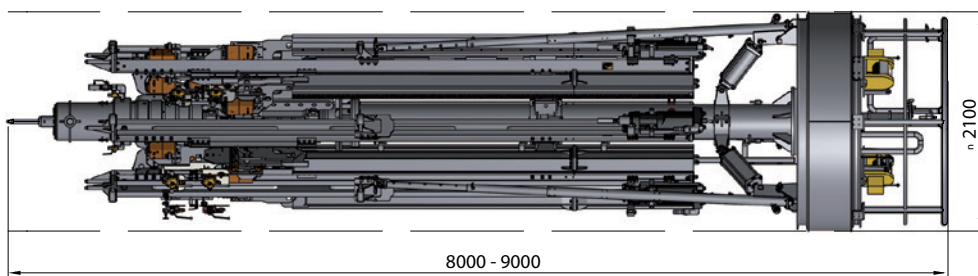




HSD 6



HSD 6 (pre-delivery test / Funktionstest)



Technical Data HSD

Technische Daten HSD

		HSD 3	HSD 4	HSD 6
Basic standard Standard		Flameproof version mit Schlagwetterschutz		
Total length approx. Gesamtlänge ca.	mm	8000 - 9000		
Transport diameter Transportdurchmesser	mm	1800	1800	2100
Weight approx. Gewicht ca.	kg	6000	8000	11500
Shaft coverage diameter approx. (min. - max.) Schachtdurchmesser ca. (min. - max.)	mm	5000 - 12000		
Compressed air consumption (at 6 bar) Druckluftbedarf (bei 6 bar)	m ³ /min	36	48	72
Drill feeds Bohrlafetten		Various / Verschiedene (drill depth up to / Bohrtiefe bis zu 4800 mm)		
Bracing elements Verspannstützen		3		
Undercarriage (horizontal parking/storage) Transportunterwagen/Parkgestell		Railbound/wheelbound schienen- oder radgeführt		